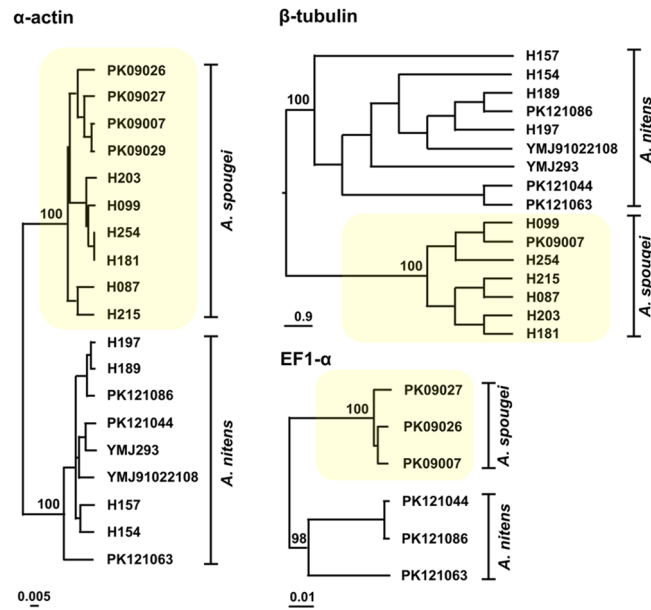


Fungal Planet 1060 – *Annulohypoxyton spougei*

FP1060 UPGMA reconstruction based on K2P distances of α -actin, β -tubulin and *EF1- α* sequences of *Annulohypoxyton nitens* and *A. spougei* specimens using PAUP* v. 4.0b10 (Swofford 2002). The UPGMA trees clearly separated two clades for each gene, indicating that the specimens belong to two distinct species. Bootstrap support values from maximum parsimony analyses are shown above internal branches. These results agree with the ITS nrDNA analysis from Suwannasai et al. (2013).